



Cleaning and caring

for varnished wood and laminate floors



proffwoodcare.ch

Varnished wood floors

Lacquered floors are available in a range of finishes from ultra-matt to gloss. They are extremely resistant to abrasion and chemicals. However, to maintain these properties, it is important that lacquered wood floors are properly cleaned and maintained. When they are laid, dirt and moisture can penetrate the joints of factory-varnished wood flooring. This area is not always fully protected due to the manufacturing process. Treatment with a wood polish containing wax varnishes and protects these fine joints.

With beech and maple flooring in particular, a good initial treatment with a waterless wax polish is essential.

Keep your floor looking beautiful

Care for it properly

Conventional floor cleaners and care products can damage wood. Avoid this by using original PROFF Woodcare products for your wood floor. Varnished wood floors are easy to maintain. They require minimal but regular attention.

Avoid wood damage from microfibre cloths

Microfibre cloths are very popular for household cleaning. However, not all microfibre cloths are suitable for varnished wood floors as they can damage the surface. Please read the manufacturer's instructions.

Protect it from drying out

A minimum of 40 percent humidity is ideal for wood flooring. Especially in winter, however, heated rooms can often be drier than this. Humidifiers will help to prevent the wood drying out.

Avoid scratches

We recommend the use of felt pads underneath your furniture. These help to prevent scratch marks appearing on the wood from moving chairs and other furniture.



Cleaning and care

Varnished wood flooring is extremely hard-wearing and easy to look after. You can remove superficial dirt easily by vacuuming and dry-mopping. You can then **damp-mop** the floor using water and Lacquer Soap silk gloss or Lacquer Care matt from PROFF Woodcare. Correct use of these specialist products will ensure optimum care.

Required accessories

Multimop

With cotton fringe
and comfort-grip handle



Bucket

Red/blue with castors



Lacquer Soap silk gloss

For routine cleaning
and care of silk-gloss
varnished wood and
lamine floors



Lacquer Care matt

For routine cleaning
and care of matt
varnished wood floors



Spot Remover Spray

Removes coffee, tea,
grease and red wine
stains, etc.



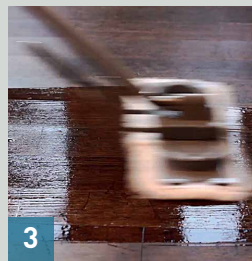
Steps



1 Use a vacuum or cleaning cloths to clean the floor, removing dust and superficial dirt.



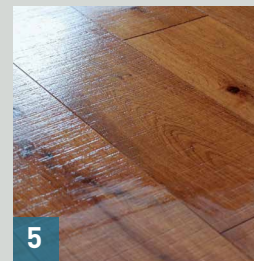
2 Mix the Lacquer Soap silk gloss 1:40 (100 ml to 4 l water) or the Lacquer Care matt 1:80 (50 ml to 4 l water) with warm water.



3 Damp-mop the floor (avoid pooling) using the cotton-fringed mul-timop pad.



4 For best results, rinse the mop in clean, warm water after every wipe to avoid spreading the absorbed dirt over the floor.



5 After cleaning and care, leave the floor to dry. Do not mop with clean water.

Cleaning and care with the PULU Spray Mop

Varnished wood flooring is extremely hard-wearing and easy to look after. You can remove superficial dirt easily by vacuuming and dry-mopping. You can then **damp-mop** the floor using water and Lacquer Soap silk gloss or Lacquer Care matt from PROFF Woodcare. Correct use of these specialist products will ensure optimum care.

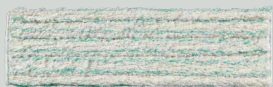
Required accessories

PULU Spray Mop

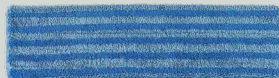
With 40 cm Velcro head,
600 ml pressurised
bottles (blue and red)



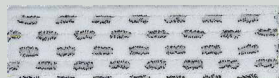
Mop



Mop pad for oiled
surfaces



Mop pad for vinyl and
varnished surfaces



Tile mop for ceramic surfaces

Lacquer Soap silk gloss

For routine cleaning
and care of silk-gloss
varnished wood and
lamine floors



Lacquer Care matt

For routine cleaning
and care of matt
varnished wood floors



Spot Remover Spray

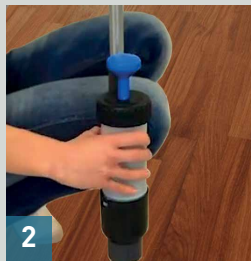
Removes coffee, tea,
grease and red wine
stains, etc.



Steps



1 Use a vacuum or cleaning cloths to clean the floor, removing dust and superficial dirt.



2 Mix the Lacquer Soap silk gloss (1 cap to 1 full external bottle) or Lacquer Care matt (½ cap to 1 full external bottle) with warm water.



3 Press SoftTouch button to activate the PULU Spray Mop spray.



4 Mop in direction of spray head.



5 After cleaning and care, leave the floor to dry. Do not mop with clean water.

Cleaning and care frequency

Use the guide below to check, at a glance, how often you should clean and oil your wood floor. This will retain the original beauty and positive features of your floor for many years to come.

Note: this schedule is only intended as a guide. Actual cleaning requirements may vary depending on the environment.

	Cleaning and care
Floors in low-traffic areas Bedrooms	Every 6 weeks
Floors in medium-traffic areas Hallways, office, living room	Every 4 weeks
Floors in high-traffic areas Kitchen, entrance, public building	Every 2 weeks



Tested and certified

To ensure PROFF Woodcare products always meet the highest environmental standards, they undergo regular intensive testing. They are also certified by the following nationally and internationally accredited bodies.



EN 71-3

The migration of metals (As, Hg, Se, Cr, Sb, Cd, Pb, Ba) from the sample was tested to EN 71 Part 3 1995. No migration of the specified metals above the detection limit (10–50 ppm) was detected. All products for the home are therefore suitable for children's toys.



DIN 53 160

Testing was carried out in accordance with method B 82.10 from the official collection of test procedures according to Section 35 of the German Foods and Other Commodities Act (adoption of German standard DIN 53 160). According to the results of the tests, the test strips applied to the various wood coatings showed no discernible colouring. The wood coatings are therefore resistant to saliva and sweat.



VOC-free

Volatile organic compounds (VOCs) are released into the air by certain solvent-based solids or liquids and can cause symptoms such as headaches in extreme situations. VOC-free products have been proven to be free from such substances.

General importer

Holzplatten AG
Weberrütistrasse 10
8833 Samstagern
T 044 7869060

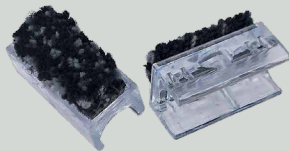
How to protect your floor

Chairfixx for cantilever chairs

For all tubular frame chairs

For hard floors

Ø12–25 mm



Footclick 2

For all chair and table legs made from wood or plastic

For hard floors

Ø12–25 mm



Footfixx with floor

Insertable floor protector for hollow tubular chair legs

For hard floors

Small, medium, large

Ø10–34 mm



Screw-in wood-floor protector

For all wooden chair and table legs

For hard floors

Ø28–34 mm



Multifixx

Universal for all furniture types

For hard floors

50 x 26 mm/35 x 18 mm



Threadfixx screw-in floor protector

For all chairs with screw thread

For hard floors

Thread M6 x 14 mm/M8 x 15 mm/M10 x 16 mm

Ø35 mm



